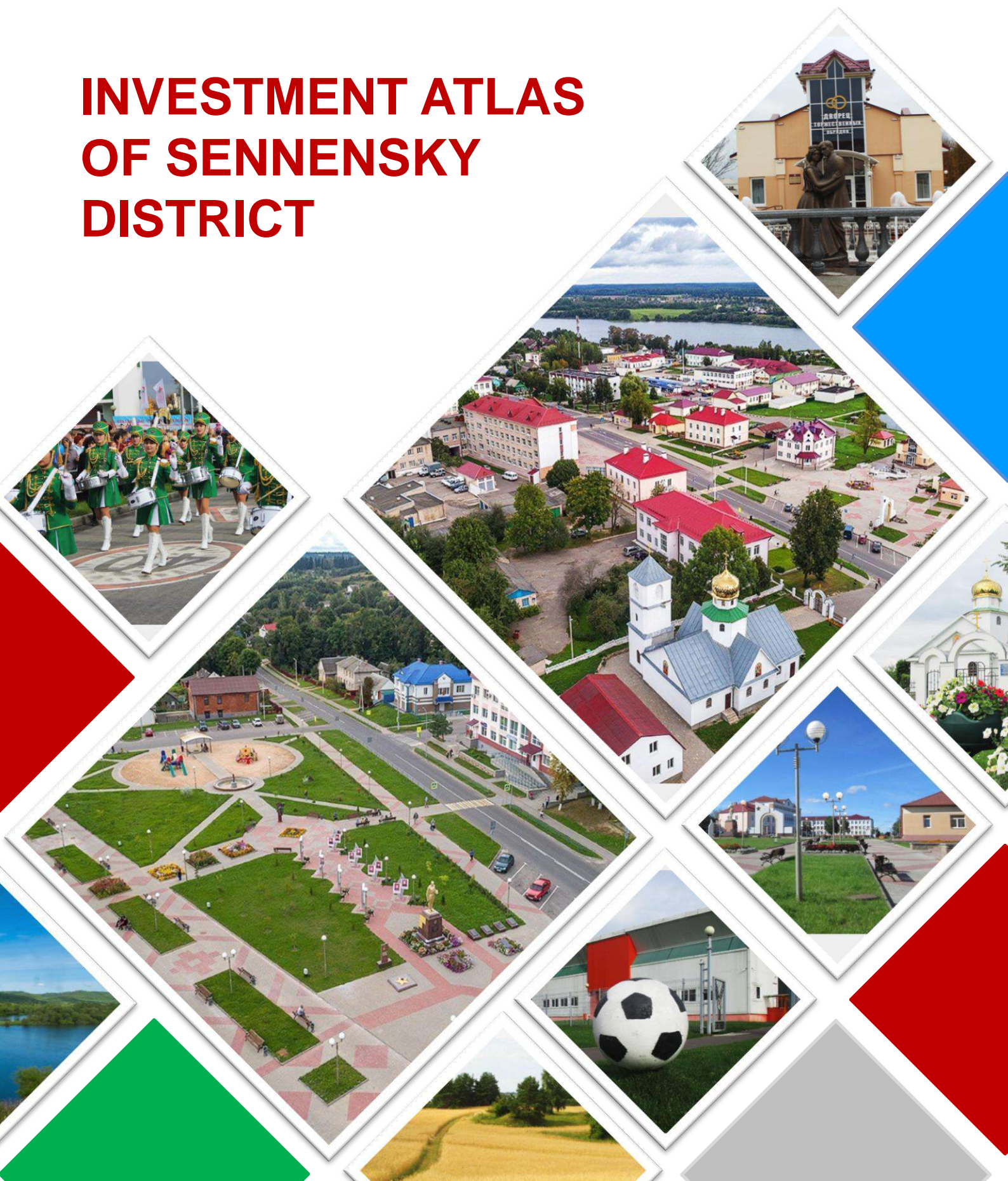




**Sennensky District  
Executive Committee**

# **INVESTMENT ATLAS OF SENNENSKY DISTRICT**





## BRIEF DESCRIPTION OF THE AREA

Senno is a small town surrounded by lakes to the southwest of Vitebsk with a population of a little more than 7 thousand people. Since 1938, it has been in the status of the administrative center of the Sennensky district of the Vitebsk region. The district includes the town of Bogushevsk and 328 rural settlements. Administratively, the district is divided into 8 village councils.

The total land area is 1,966 square kilometers, which is 5% of the territory of the Vitebsk region.

The district is bordered on the south by Tolochinsky and Orsha districts; on the west by Chashniksky district, on the northwest by Beshenkovichi district, on the north by Vitebsk district and on the northeast by Lioznensky district.

Sennensky district has a favorable geographical location, developed transport infrastructure allows the district to be attractive to investors.

The territory of the district is crossed by two railway lines: Vitebsk - Orsha, Orsha - Lepel, as well as the Druzhba oil pipeline and the oil product pipeline of the linear production site of the Gorky linear production control station of the Novopolotsk oil transportation branch of JSC Gomeltransneft Druzhba.

Senno is located at the crossroads of roads - highways diverge from the city to Vitebsk, Bogushevsk, Chashniki, Beshenkovichi and Tolochin.

One of the competitive advantages of the region is its proximity to large industrial cities: the distance to Vitebsk is 60 km, to Minsk is 213 km.

The population of the district is 20.3 thousand people, including urban - 9.8 thousand people, rural - 10.5 thousand people. 2.4 thousand people live in Bogushevsk. The population employed in the economy is 7.6 thousand people, of which 18.8% are employed in the field of entrepreneurship.



## RESOURCE BASE

The area has a rich natural resource potential.

In the Sennensk region there are deposits of sand-gravel mixture in the tracts "Kokovchino-1", "Borovikskoe", "Dubnyaki-1", "Ovsishche", clay - in the tracts "Popovka", "Rakita", "Tupichino", organic sapropels - in the fields "Holy Swamp", "Karasaevo", "Lyubachi".

The balance reserves of sapropels have been confirmed by tests of the state scientific institution "Institute of Nature Management of the National Academy of Sciences of Belarus"

The territory of the district is a dense network of lakes, there are 69 and 13 artificial reservoirs in the area, the total length of streams and rivers is 300 km. The largest lakes are Sennenskoye, Bogdanovskoye and Lipno.

Lakes are an integral part of the natural environment of the district, have great environmental and economic importance, they contain large reserves of water, biological, mineral, recreational and information resources. There are excellent prospects for the development of fishing and tourism.



The total area of agricultural land is 74.7 thousand hectares, including: 55.4 thousand hectares of arable, 18.7 thousand hectares of meadow, 437 hectares for permanent crops (gardens).

The lands of the Sennensky district are suitable for cultivating agricultural crops: wheat on an area of 16.9 thousand hectares (30.5% of arable land), rye, oats, legumes – on 54 thousand hectares (97.5% of arable land), flax - on 15.2 thousand hectares (27.4% of arable land), potatoes – on 13.5 thousand hectares (24.4% of arable land), rapeseed – on 29.8 thousand hectares (53.8% of arable land).

According to the mechanical composition, arable soils are divided into clay + loamy (59.3%), sandy loam (33.1%), sandy (6.2%), peat-swampy (1.4%).

The fertility score of agricultural land is 25.3, the arable land score is 27.4.

Forests occupy 42% of the district's territory. 82.5 thousand hectares are occupied under the state forest fund, the total area of swamps is 15.4 thousand hectares.

The district has experienced qualified personnel and a sufficient raw material base. Comfortable conditions have been created for the development of small and medium-sized businesses.





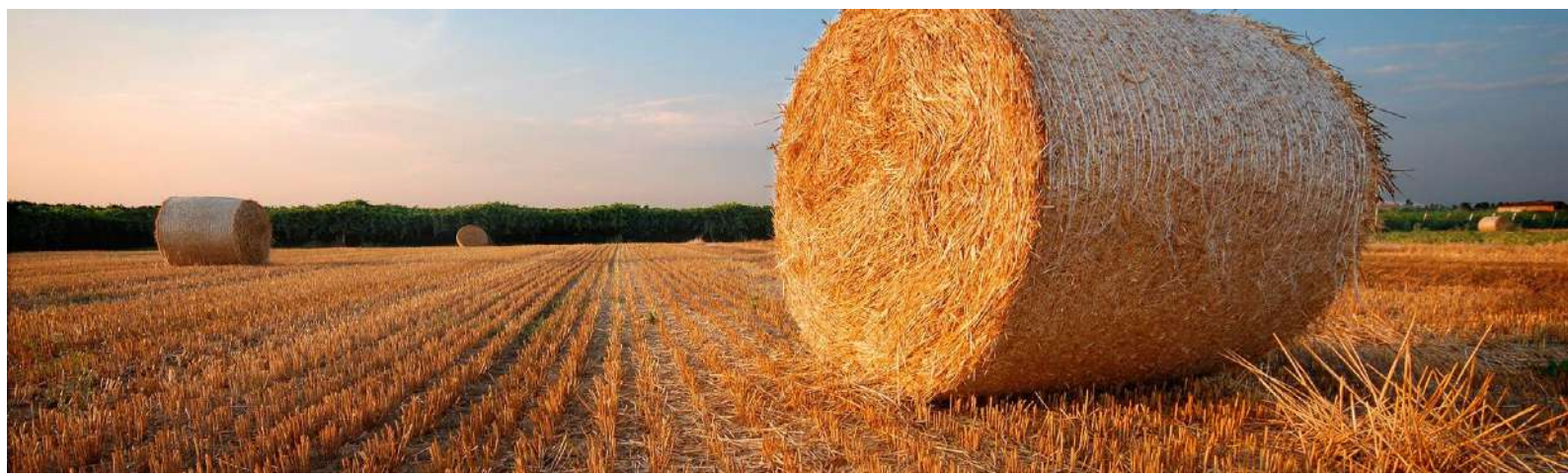
## INFRASTRUCTURE

Agriculture occupies a leading position in terms of the number of employed able-bodied population and the volume of output.

The agro-industrial complex consists of 9 agricultural organizations and 29 peasant farms. The farms of the district specialize in dairy and meat animal husbandry, production of grain, potatoes, vegetables, rapeseed seeds.

The industrial complex of the district is represented by: 1 subject of regional subordination (structural subdivision "Bogushevsky Distillery" JSC "Vitebsk LVZ "Pridvinye" (production capacities: rectified alcohol 650 thousand dall, distillate from grain raw materials 20 thousand dall, carbon dioxide 1465 tons, rye malt 270 tons, antiseptic 1050 tons) and 2 enterprises of communal ownership (KUPBO "Prestige– - manufacture of garments, housing and communal services - production and distribution of heat).

The woodworking production facilities are represented by such enterprises as: the state forestry institution "Bogushevsky Forestry" (a workshop for the production of fuel pellets, a fuel chip production point and 2 woodworking workshops), JSC "Vitebskles", the state forestry institution "Vitebsky Forestry", as well as 3 small and medium-sized businesses: MILCONFOREST LLC (production capacity for sawing wood 35 thousand cubic meters per year), LLC "Saint-Tov" (wood sawing capacity 8 thousand cubic meters . meters per year), CHUP "Sanforest" (wood sawing capacity of 5 thousand cubic meters per year).







Transport services to the population are provided by the section of the city of Senno Column of the automobile JSC "Vitebskoblavtotrans".

For passenger service, there is 1 bus station in Senno, 2 railway stations in Bogushevsk and Burbin.



A 29-bed hotel is located in the center of the city of Senno within walking distance.







Sennensky district is rich in its cultural potential.

The cultural sphere of the district is represented by 19 institutions, including the House of Crafts and the Museum of Local Lore.

3 children's art schools are engaged in introducing children to musical culture in the district.

There are 15 public libraries with a total book collection of 201 thousand copies at the service of readers . books and periodicals.





A great contribution to the development and preservation of cultural traditions is made by the creative collectives of the district. Among the collectives there are 9 amateur groups that bear the title of "people's", 1 – "exemplary".

Popular among residents of the district are events presenting ritual and game components of folk holidays.



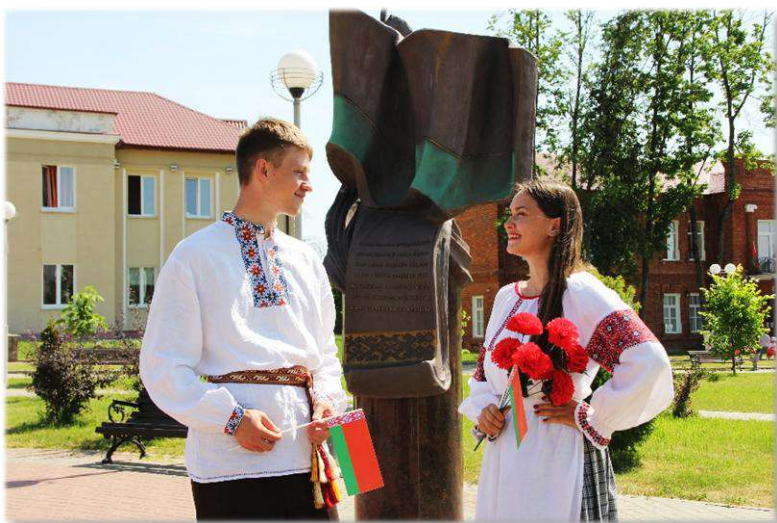
*The Devil's Stone, located near the village of Voronino, is the second largest among Belarusian boulders and is a natural monument of republican significance.*



The historical and cultural potential of the district is represented by 120 objects, of which 20 are included in the State List of Historical and Cultural Values of the Republic of Belarus, including: 4 architectural monuments, 9 archeology, 7 historical monuments.



*Krinitza "Kaplichka" in Senno is declared a monument of nature. It has been known for a long time as a source of healing pure water, which contains hydrogen sulfide.*



*Memorial sign "Native land", installed in honor of the author of the ornament on the National Flag of the Republic of Belarus Matryona Markevich*



9

Medical assistance to the population is provided by the health care institution "Senna Central District Hospital" ("Bogushevskaya District Hospital", "Yanovskaya Hospital nursing care", "Moshkanskaya Hospital of Nursing Care", 2 outpatient clinics and 18 paramedic-obstetric stations).

For the organization of physical culture and recreation work

in the district there is an educational and sports institution "Sennenskaya children's and youth school of the Olympic reserve", a district sports and recreation complex, a biathlon base

The register of physical culture and sports facilities of the district includes: 38 sports grounds, 14 gyms, 5 gyms, 2 winter equipment rental points, 13 sports cores, 1 ski base, 1 roller ski track, 2 mini football fields with artificial turf, 1 rope town.





## AGRO-ECO-ESTATES

In today's stress-filled world, it is important to be able to stop and rest to gain strength. Psychologists recommend not so much to chase new impressions during the rest, as to find places where you can feel relaxed, in which you do not need to run for the next tour bus. A measured, calm pace of life strengthens the nervous system and health and gives life new colors, energy for new achievements. Considering that Sennenshchina is famous for its picturesque places, agroecotourism is actively developing here. There are 18 agro-eco-farms in the area.

What could be better than a country house for recreation? Probably nothing! You can go there at any time of the year, in a large company, or to retire with loved ones, relax body and soul, take horse rides, enjoy the beauty of nature.

### 1. The estate "Azure"

Gazebo on the shore of Lake Sennenskoe for 50 people. There is a barbecue complex, barbecue. It is possible to organize walks on the lake by boat and catamaran, fishing.

Address: Senno, Oktyabrskaya str., 28  
tel: +37529 218 48 02





## 2. The estate "Sunny corner"



"Sunny Corner" is an ideal place to relax, here you can always relax away from the hustle and bustle of the city, enjoy the beauty of nature, a variety of entertainment programs.

In the estate, you can just spend a weekend or vacation, and come with a company for family or corporate holidays.



Near the estate there is a clean artificially created river with running water and beautiful natural stones. Here you can admire the original sculpture, watch the fish frolicking in the water, sunbathe on the shore. A private sandy beach within a five-minute walk will allow all lovers of "quiet rest" to enjoy peace, clean water, bright sun with maximum amenities.

The most beautiful natural lake Lipno is 350 meters away.



Winner of the contest "The best farmstead of 2015 in Vitebsk region" in the nomination "The best start"





The "Sunny Corner" took care of the leisure of the guests. Wonderful hunting and fishing, exciting quad biking, zorbing, interesting excursions and horseback riding will not let anyone get bored.

There is an excellent wood-burning sauna with a separate steam room, a pond with running water.

There is a young orchard with apple and pear trees.

It offers live music, a varied menu and attentive staff.

Address: n.p. Gornovo, d. 15

website: [www.sunlit.by](http://www.sunlit.by)

tel: +375 33 648 68 11

+375 33 346 73 39





### 3. Agroecousadba "Berezki"



Agroecousadba "Berezki" is a multifunctional recreational complex located in a beautiful corner on the shore of the incredibly beautiful Berezovsky Lake in the village of the same name.

"Rest with home comfort" is the basic concept of the farmstead. Rooms with all amenities and a picturesque view from the window offer relaxation.

The landscaped territory has a large number of places to relax: a terrace, sun loungers, benches, a barbecue area.

Sports enthusiasts are offered a beach volleyball court, hiking trails, boating and catamarans.

There is an opportunity for fishing and hunting.

Address: n.p. Berezki, Ozernaya str., 23a

website: [www.berezki.by](http://www.berezki.by)

tel: +37529 711 99 77







#### 4. The estate "Lyalukomorya"

It is located on the picturesque shore of the lake, 27 km away from the city of Vitebsk. The cozy atmosphere of the farmstead "Lyalukomorya" attracts a variety of customers who are interested in tourism or vacation in the country, ideal for families with children and for relaxing with friends.

On the territory of the estate there are: 2 two-storey cottages, a sauna with a banquet hall and a barrel of Furako, a playground, table tennis, a catamaran, a 30-ton swimming pool for a large company, gazebos and barbecues (provided to all guests for free!), Parking for cars, free Wi-Fi and much more.

Address: n.p. Moshkany, Priozernaya str., 9

website: <http://lukom.by/>

tel: + 375 33 365 26 52 (MTS)

+ 375 29 369 26 92 (Velcom)

**Winner of the competition  
"The best farmstead of 2014 in  
Vitebsk region"  
Guest Review Awards 2017**







## 5. Estate "Motor Reservation"

MOTO REZERVATION is an extreme estate that combines the untouched beauty of nature with the post-apocalyptic power of fire and burning metal in the style of "MAD MAX", soaked in the blood and spirit of one of the largest and tragic tank battles of the Great Patriotic War - the Battle of Senno.

On the territory of the estate, a MOTORCYCLE strike is held annually, a unique project on the territory of Belarus that allows combining a traditional bike festival, open-air, pyrotechnic show, active recreation, and a rich entertainment program.



The estate is located on the shore of the picturesque Berezovsky Lake, there is a well-maintained private beach, an indoor pier, deck chairs, a fishing bridge, an indoor bar for 30 seats, a barbecue area, a volleyball court, a tent city.

Address: n.p. Zaozerye  
tel: + 375 33 675 96 64 (MTS)  
+ 375 29 518 57 98 (MTS)







## 6. The Manor

### "Bathhouse on Obali"

The farmstead is located in a unique corner of its beauty, 30 kilometers from Vitebsk on the banks of the Obolyanka River. There is everything for true connoisseurs of nature, authentic village life and a Russian bath.

Among other things, this is an interesting historical place, called in the past "falvarak Obal". Nearby is an ancient wooden church of the 19th century. In it, according to sources, Heroes of the Soviet Union Pyotr Masherov and military pilot Alexander Horovets, who shot down nine German planes at once in one air battle, were baptized natives of these places.

It is possible to organize hiking and cycling trips, fishing and hunting (Markoservice hunting farm is next door). A quiet, cozy place for chamber recreation, couples and lovers. It is also possible to conduct educational seminars, yoga trainings, plein

-airs, etc. Barbecues, gazebos, boats, bicycles, sports equipment, etc. are at guests' disposal.

Address: n.p. Obol, 4

tel: + 375 29 714 41 44 (MTS)







## 7. Estate "Heritage"

The estate "Spadchyna" is located in a picturesque place, 7 km away from the city of Senno (65 km. from Vitebsk). For comfortable accommodation, two guest houses (Wi-Fi), a Russian sauna, gazebos, barbecues with firewood, a modern hayloft, a volleyball court, a horse ride, a hookah, paintball and much more are offered.

Address: n.p. Zaozerye  
tel: + 375 29 513 86 39  
+ 375 29 243 60 19







## 8. Bogdania Manor

The property is located 70 km away from Vitebsk, 7 km from the town of Senno on the shore of Lake Bogdanovskoye. It is possible to hold special events (up to 30 people), recreation, leisure, fishing. There is a sauna, barbecue, boat, catamaran.

Address: n.p. Bogdanovo, Embankment str., 36

tel: + 375 29 591 99 44



## 9. The Manor

### "On the Embankment"

The farmstead is located on the bank of the Obolyanka River. A beautiful garden is laid out on the territory, a mini-museum is equipped. A one-storey house with a stove is provided for living. The estate is suitable for a cozy family holiday or relaxing with close friends, fishing.

It offers barbecue facilities, a volleyball court, a boat.

Address: n.p. Moshkany, Embankment str., 11

tel: + 375 25 909 08 40





## 10. The estate "Ordyshevo"

The farmstead "Ordyshevo" is a log 2-storey house located in a wooded area on the shore of Lake Ordyshevo with a sapropelist bottom, with good access roads. The house is equipped with all amenities, fully equipped for living and recreation of tourists: there are five living rooms, a large lounge, a kitchen, showers.

Near the house, on a landscaped territory, there is a sauna, a pond, a summer gazebo. Here, away from city worries, tourists are given the opportunity to enjoy the peace and tranquility, to get acquainted with the beauty of the surrounding nature.

A characteristic feature of this area is the presence of an ecologically clean forest area.

For lovers of active recreation, cycling and hiking routes have been developed along military-historical sites.

Address: Bogushevsky  
Council, near the lake  
Ordyshevo  
tel: + 375 29 711 71 01





## 11. Manor "Kupalnitsa"

At guests' disposal is a house with an equipped kitchen (refrigerator, microwave oven, gas stove, electric kettle, dishes), bathroom, hot and cold water, shower. It can comfortably accommodate up to 14 people, there are 3 bedrooms, a living room with a large banquet table, a gazebo, a seating area, a barbecue area, a sandbox for children.

It is possible to order dishes of Belarusian cuisine.

It offers a wood-burning sauna, which is equipped with a relaxation room, steam room, washing room. There are 4 stocked ponds.

Address: n.p. Melikhovo, 30

tel: + 375 29 217 43 54 (MTS)



## 12. Estate "Perekopovskaya"

The estate is a three-storey house with 2 heated garages, a bathhouse made of Khanty-Mansi cedar.

There are stocked ponds 300 meters away, and Sosno Lake of the 2nd class of cleanliness is 150 meters away. There is a pool with spring water.

Address: n.p. Perekopovo, 36

tel: + 375 29 717 46 07 (MTS)

+ 375 29 307 00 39 (Velcom)







### 13. Estate "Zaozerskaya"

Lovers of nature, water, air, environmentally friendly products, recreation, contemplation, welcome to the farmstead "Zaozerskaya". The friendly hosts offer a one-storey house with all amenities and cozy rooms on the shore of Lake Berezovskoye.

The farmstead offers catering from environmentally friendly products. Catamarans and boats, bicycles and ATVs are provided for lovers of active recreation, cycling and hiking routes through military historical sites have been developed.

The farmstead is perfect for family holidays.

Address: Studenkovsky Council, n.p. Zaozerye, Oзерная str., 19.

tel: + 375 33 676 01 46





## 14. Manor "Rybnoye"

The Rybnoye estate, located away from the hustle and bustle of the city, offers a cozy log house with a fireplace. The house has 3 rooms, a kitchen, all amenities.

The house has stove heating. The farmstead is located on the shore of a lake where you can fish and arrange boat trips. It is possible to organize hunting, paintball, excursions. Free parking is available on site.

Address: n.p. Rybnoye  
tel: + 375 29 714 82 05 (MTS)



## 15. The estate "Cordon"

Rest on the shore of the lake in a quiet and beautiful place. The opportunity to swim on a boat, take a steam bath, fish.

The farmstead is focused on wellness, family holidays. Vacationers will be provided with a two-storey bright spacious house with large windows with access to the lake.

Address: Studenkovsky Council, n.p. Zaozerye, Ozernaya str., 1  
tel: + 375 29 661 31 77 (Velcom)  
+ 375 29 891 56 34 (MTS)





## 16. The estate "Berezki"



The farmstead is located on the shore of Lake Berezki. For recreation, a log house is provided for two rooms, which can accommodate 6 people, a sauna, a gazebo.

Address: Student Council, n.p. Berezki, Ozernaya str., 21.

tel: + 375 29 898 87 06

## 17. Manor "Little Finland"

Not far from Vitebsk (70 km), in the village of Yanovo, there is a cozy 2-storey house for 10 people, built using Belarusian-Finnish technology with Scandinavian decoration.

The house has an electric sauna, a fireplace (heated with wood), 3 bedrooms. On the territory there is a grill, a terrace, a gazebo with an inflatable pool (Jacuzzi).

Among the entertainment offered are bicycles, hiking, horse-drawn carriage rides, excursions, fishing (10 km away), boats for rent, organized in nearby hunting grounds hunting for wild animals on huntsman's vouchers.

Address: n.p. Yanovo,  
Ozernaya str., 18A.  
tel: + 375 29 502 71 67





# INVESTMENT PROPOSALS

## 1. Organization of production of house kits

The purpose of the investment proposal is to create a production of wooden low-rise houses using the technology of panel-frame house construction of arbitrary design, as well as the organization of a construction and installation enterprise for subsequent installation and finishing "turnkey".

Areas of activity:

creation of an architectural project;

in accordance with the project, the production of the frame and wall panels in the production workshops;

construction of the foundation for the future panel-frame house;

installation: delivery of finished elements of the house to the site, their assembly in accordance with the drawings.

Construction using panel-frame technology is an inexpensive and environmentally friendly solution suitable for capital energy-saving construction.

At the same time, the construction of such a house has a low weight, so it does not require laying a powerful foundation. This construction technology is possible even in severe frosts.

The expected contribution of the investor is 500 thousand rubles.

About 7 people will be employed in the newly created jobs.

Advantages of the project:

extensive raw material base;

speed of construction, budget, environmental friendliness;

availability of qualified labor resources;

benefits and preferences in the implementation of an investment project.



## 2. Construction of a grain cleaning and drying complex

The grain drying capacities available to farms, taking into account their wear and tear, cannot effectively process all grain. In difficult weather conditions of harvesting and increasing yields, the shortage of grain processing capacity will increase even more, causing a corresponding increase in grain losses.

In order to ensure the food security of the region, it is planned to implement a project that involves creating a new, equipped with modern equipment, a complex for post-harvest processing and drying of grain with a capacity of 60 tons /hour.

The stationary open-type complex is designed for post-harvest in-line processing of cereals, legumes, cereals and other food and feed crops.

The estimated humidity of the incoming grain crop is up to 22%.

The contamination is up to 15%, including the content of a large impurity up to 5%. The level of mechanization of production processes is 100%. All operations for receiving heaps, drying and transporting grain, releasing finished products and waste are fully mechanized.

The complex performs the following functions:

- reception of contaminated and wet grain for pre-cleaning, drying and loading on vehicles;

- reception of contaminated and dry grain for pre-cleaning and loading on vehicles.

- reception of clean and moist grain for drying and loading of vehicles.

For temporary storage of grain coming from the field, it is planned to build an open paved area, hangars.

The volume of investments from 5 million rubles.



### 3. Organization of production of arbolite blocks

The project involves the organization of production of a wide range of arbolite slabs for low-rise construction:

- structural blocks for exterior walls;
- thermal insulation blocks for external walls;
- structural blocks for exterior walls with an ordinary layer;
- blocks for exterior walls are structural with a front layer.

The composition of the products intended for production: modifying additive "Arbel", cement, wood chips, water.

Due to this composition, the blocks have the following properties:

- low cost;
- environmental friendliness;
- provide good sound insulation;
- retains heat due to the thickness of the layer;
- easy to use, easily drilled, polished;
- resistant to environmental influences, including fire;
- do not mold and do not rot;
- durable;
- they provide good air exchange due to porosity.

In order to open the production of arbolite slabs, a room with an area of at least 200 square meters will be required, on the territory of which there are: a production zone, a drying zone, a storage area, administrative premises.

The production of blocks is possible on the areas of the former GUO "Moshenskaya kindergarten - secondary school of Sennensky district", with a total area of 1988.4 sq.m. A plot of land with an area of 4,0068 hectares 11 km from Senno, on the P25 highway, 44 km from Vitebsk. Communications: electricity, water supply and sewerage, boiler house on local fuels.





The production technology itself is quite simple, does not require high qualifications or special skills, and consists of the following stages:

- withstanding wood waste under a canopy for 30 days;
- splitting of wood;
- soaking of wood chips (necessary in order to remove sugar from it);
- preparation of the working mixture;
- adding other components to the mixer (cement, water with the necessary additives) and mixing the mixture;
- filling with a ready-made composition of forms, its tamping and sealing;
- stripping of finished blocks and their exposure.

In order for the finished products to gain the necessary density, it takes from 1 to 5 days. If the blocks are produced using a press at a pressure of 2.5-3 MPa, the stripping can be carried out immediately.

The blocks should be dried in a well-ventilated room, not exposed to direct sunlight, for 10-15 days.

You can send them to the warehouse in 3-5 days, and transport them in 14-20 days.

The complete set of universal automated complexes includes concrete mixers, vibropresses, hopper dispensers, belt conveyors and hopper receivers. It is also required to purchase a crushing machine.

The required investment volume is 800 thousand rubles.

The payback period is 2.5 years.

The project involves the creation of 5 new jobs.



## 4. Organization of the mortar-concrete unit

For consumers, this is an opportunity to get a fresh mixture near the building site, for entrepreneurs - a profitable business in an area where demand is consistently high.

A mixture of appropriate materials is the basis for the manufacture of concrete and mortar. The quality of the products obtained is ensured by the correct selection of the components that make up the mixture, the exact dosage of these components and their thorough mixing.

The node consists of several modules:

1. mixer hopper for solution preparation;
2. containers with dispensers and strain gauges for the main components of concrete and chemical additives;
3. water tank and filtration system;
4. control unit.

The estimated investment volume is 200 thousand rubles.





## 5. Organization of export-oriented mushroom production

Considering that there are more than 12 peat deposits in the Sennensky district, the industrial production of mushrooms (oyster mushrooms and champignons) is one of the most investment-attractive industries.

According to the structure of the peat deposit, the unprocessed peat deposits "Azerki" (total area of 122.22 hectares, reserves of 2737.7 thousand m<sup>3</sup>) and "Moat" (total area of 123.1 hectares, reserves of 3416 thousand m<sup>3</sup>) are most suitable for growing mushrooms.

The project involves the creation of a production base equipped with the necessary ventilation and climate equipment.

The total investment volume is 1.6 million rubles.

Industrial mushroom farming is economically feasible due to the high-intensity type of production, high yields of mushroom crops and the exclusion of seasonal work, characteristic of most sub-sectors of the agro-food complex. With the correct organization of the production process, 8-9 mushroom harvests per year can be removed from 1 m<sup>2</sup> of usable area, which corresponds to 270 kg of products per year.



## 6. Organization of peat pellets production

Sennensky district has a rich natural resource potential. There are more than 12 peat deposits on the territory of the district. The largest explored deposits for peat extraction are:

"Black Ditch", reserves of 605 thousand tons;

Chistik III, located on the watershed of the Kamenchanka and Chudinka rivers, reserves of 242 thousand tons;

Hibni, located in the water-protected zone of the lake. Novoselskoye and the Svecha river, reserves of 191 thousand tons.

The peat fund of the district has prospects for industrial use as fuel.

Currently, a lot of attention is paid to environmentally friendly, reliable, renewable energy sources, such as peat.

Along with traditional types of peat fuel, such as lump or milling peat, a new, modern, technological and environmentally friendly type of this fuel – peat pellets is becoming increasingly relevant.

The investment project involves the organization of the production of peat pellets of a full cycle: from peat extraction at the field, to the production of ready-to-use pellets.

When burning 1 ton of peat pellets, as much thermal energy is released as when burning: 1.6 tons of wood, 475 cubic meters of gas, 500 liters of diesel fuel, 685 liters of fuel oil.

As a rule, milling peat is used as a raw material for the production of peat fuel pellets, pre-dried naturally in the fields to a moisture content of 45-60%. Before delivery to the processing plant, milling peat is pre-cleaned on screens from large impurities: stones, tree roots, etc.

The entire technological chain of production of fuel pellets from peat can be divided into the following sections:

Preparatory section. At this site, wet raw materials are crushed in hammer crushers, after which fibers and wood inclusions larger than 10 mm are separated using a screen. Such peat is ready for the next stage – drying.



Drying area. For granulation, peat should come with a humidity of 8-12%. Various types of dryers can be used to dry peat, but due to the increased explosive hazard of peat dust, certain requirements are imposed on them. In addition, drying can only be done indirectly, that is, the flue gases in the heat exchanger heat the air from the environment, which is the drying agent. After drying, the raw materials are finally crushed in hammer crushers to the fraction necessary for feeding into the granulator press.

Granulation area. This site is the "heart" of pellet production, the final stage. Dry crushed peat is pressed into cylindrical granules of a certain diameter. Immediately before entering the pressing chamber, the crushed raw materials are processed with dry steam, which makes it more malleable to pressing and activates adhesives. Fresh pellets contain excess moisture, have a temperature of about 80 ° C and are very fragile, so they are sent to the next stage – cooling, where, in addition to lowering the temperature to the ambient temperature, the pellets are dried to the level defined by the standard. After the granules acquire hardness, it is necessary to give them a marketable appearance by removing small particles from their mass that were formed during transportation through the technological cycle.

Packing area.

One of the options for the implementation of the project is the organization of production on the existing areas of the housing and communal services in the city of Senno. The finished products will be sent for their own consumption for heating (about 2.8 thousand tons) and for sale to individuals and legal entities.

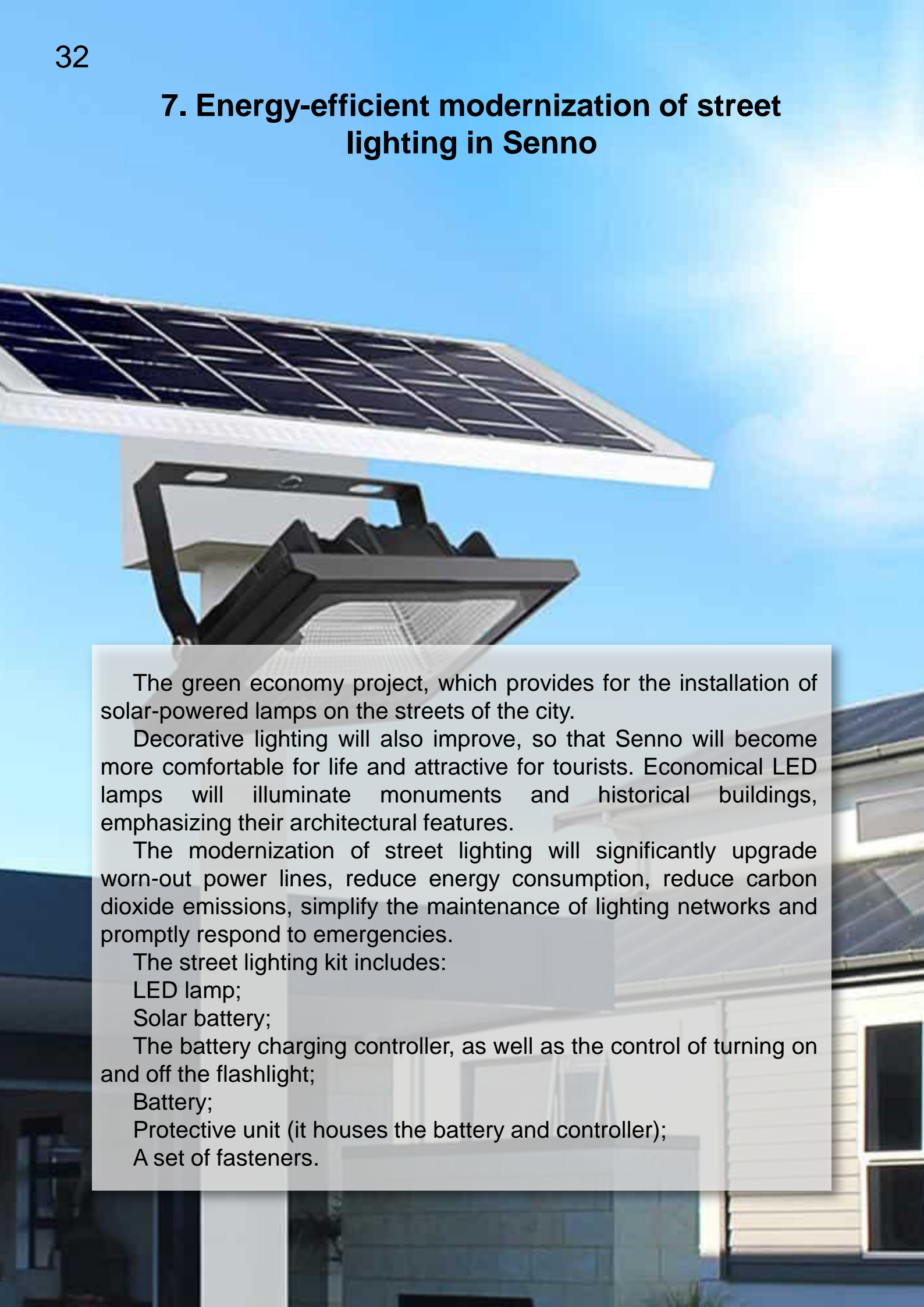
The project provides for the reconstruction of the central boiler house of the city with the transfer of boilers to pellets, which will save 1300 thousand cubic meters of natural gas, or 1.1 million rubles.

The required volume of investments for the organization of production will be about 2500 thousand rubles, excluding the cost of reconstruction of the boiler house.

The project provides for the creation of 6-8 new jobs.



## 7. Energy-efficient modernization of street lighting in Senno



The green economy project, which provides for the installation of solar-powered lamps on the streets of the city.

Decorative lighting will also improve, so that Senno will become more comfortable for life and attractive for tourists. Economical LED lamps will illuminate monuments and historical buildings, emphasizing their architectural features.

The modernization of street lighting will significantly upgrade worn-out power lines, reduce energy consumption, reduce carbon dioxide emissions, simplify the maintenance of lighting networks and promptly respond to emergencies.

The street lighting kit includes:

- LED lamp;

- Solar battery;

- The battery charging controller, as well as the control of turning on and off the flashlight;

- Battery;

- Protective unit (it houses the battery and controller);

- A set of fasteners.



#### Advantages of solar-powered lamps:

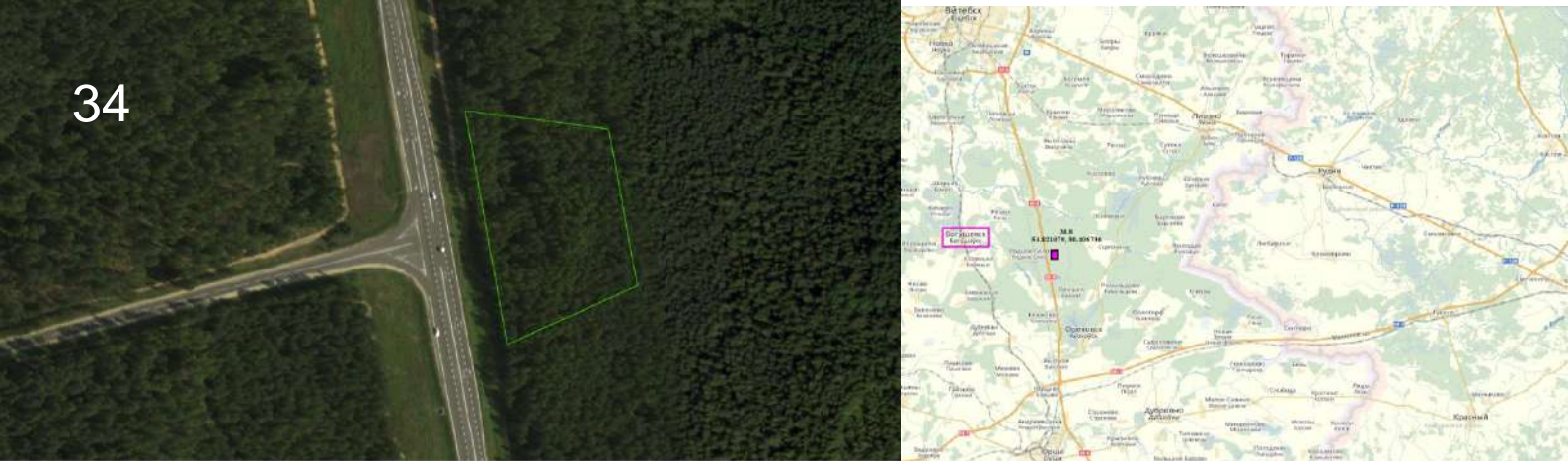
- Autonomy: solar-powered lamps do not need to be powered from the mains, regularly change batteries or charge batteries in the traditional way. They provide themselves with energy for normal functioning, receiving it from the sun's rays.
- Compactness and mobility: almost all models of lighting devices of this type have low weight, compact dimensions and non-stationary mounting, so they can be removed from one part of the site at any time without the involvement of special equipment and moved to another or simply put away for storage.
- Cost-effectiveness: since the main source of energy for such lamps is the sun, lighting costs will be zero. Even consumables will hardly have to be changed: LED lamps, which are equipped with devices, serve for 50 thousand hours or more.
- Easy installation: the lamps are easily installed in any part of the site and are also easily dismantled if necessary.
- Electrical safety: the devices are not connected to the network, they do not need power wires, that is, the probability of electric injury during their operation is reduced to zero.
- Environmental friendliness: when using solar energy, no harmful substances are released into the environment. Solar-powered lamps themselves do not need non-renewable resources (gas, oil, coal, etc.) to work.

The total investment is 2 million rubles.

The implementation of the project is possible on the terms of public-private partnership.







## 8. Construction and maintenance of a gas station, retail and catering facilities

Construction and maintenance of a gas station, retail and catering facilities at the intersection of the highways M-8/E-95 border of the Russian Federation (Yezerishche) – Vitebsk-Gomel-border of Ukraine (Novaya Guta) and R-86 Bogushevsk-Senno-Lepel.

The facility includes: a station for 15 places, a gas station, a food point for 20 places, a service station for 2 posts, a car wash.

There are no engineering communications. There are no buildings and structures on the land plot.

The total investment volume is 2.5 million rubles.

The land plot with cadastral number 224481700001000017 with an area of 1,0002 hectares of reserve lands is included in the list of plots intended for subsequent provision to investors for the construction of facilities provided for by investment agreements concluded with the Republic of Belarus.

An urban planning passport has been developed for the object.





## 9. Organization of bottled water production

To implement the project, there is a complex of buildings of the former soft drinks workshop.

Location: Vitebsk region, Senno, Komsomolskaya str., 21.

Offer for use: sale or lease.

Object characteristics: the complex consists of 8 capital buildings: former laundry with an area of 434.2 sq.m. (brick building, w/b overlap, concrete floors); room for primary processing of apples with an area of 267.7 sq.m. (brick building, w/b overlap, concrete floors); stable building with an area of 29.8 sq.m. (log walls); utility room with an area of 60.6 sq.m. (plank); weighing building (area 49.9 sq.m. w/b foundation, brick walls); alcohol storage with an area of 177 sq.m. (w/b foundation, brick walls); transformer substation with equipment; the workshop building with an area of 1,337 hectares (w/w foundation, brick walls, brick partitions, silicate blocks and drywall).

Communications: there are power lines, sewer network, water supply, boiler room, distance from gas supply 10 m.

Balance holder: Sennensky branch of the Vitebsk Regional Consumer Society.

The total investment volume is 1 million rubles.





## 10. Construction of a shopping and entertainment center in Senno

Shopping and entertainment centers are very popular with ordinary people: here you can shop, relax and have a delicious lunch. The opportunity to place a child in the playroom becomes an additional bonus. For the population, this type of leisure is also attractive because the shopping and entertainment center gathers companies under its roof that can satisfy diverse needs, and a person does not have to spend time and effort searching for this or that organization – everything is in one place. Therefore, the shopping center construction project is economically attractive.

The project involves the construction of a shopping and entertainment center with an original concept, an attractive facade and a variety of services and entertainment.

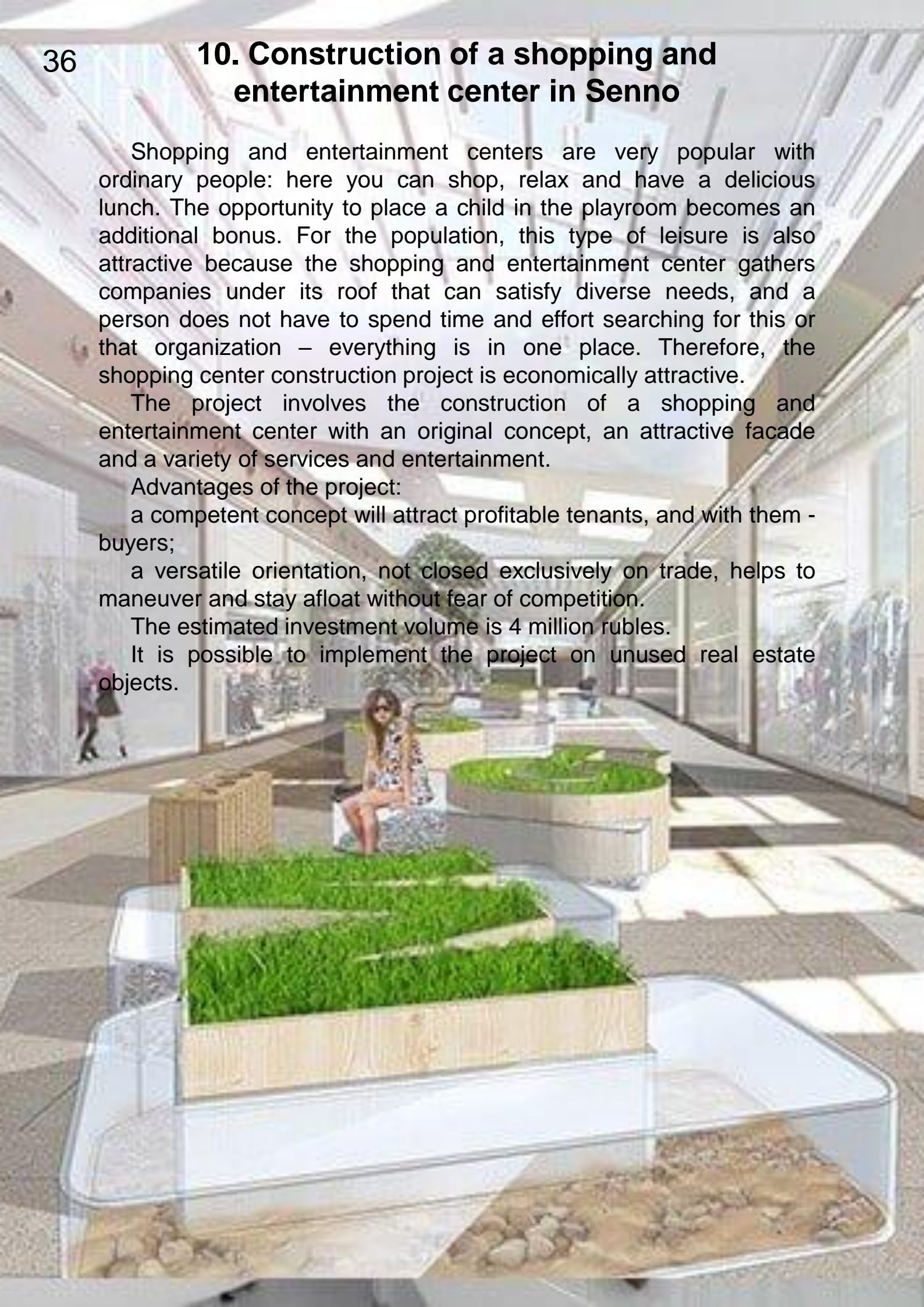
Advantages of the project:

- a competent concept will attract profitable tenants, and with them - buyers;

- a versatile orientation, not closed exclusively on trade, helps to maneuver and stay afloat without fear of competition.

The estimated investment volume is 4 million rubles.

It is possible to implement the project on unused real estate objects.





## 11. Construction of a car wash

One of the most profitable niches in the automotive services market is the services for washing various types of cars. Each owner tries to keep his vehicle clean, so he has to use the services of specialized organizations. Also in the modern world, in addition to direct washing of the body, polishing services, dry cleaning, body wax coating, etc. are in demand.

This project involves the creation of a full range of services for car washing, including trucks, and cosmetic maintenance of cars in the city of Senno.

The minimum set of equipment that is required:

- 1) A high-pressure device with water heating;
- 2) Water supply apparatus;
- 3) Compressor;
- 4) Vacuum cleaner;
- 5) Water purification complex.

The required land plot will be selected for the implementation of the project.

Investment costs are about 600 thousand rubles.





## 12. Extraction and sale of sapropel

The presence of mineral reserves on the territory of the district determines the prospect of creating a production facility for the extraction of organic sapropel. The balance reserves amount to 794.3 thousand tons.

The State Scientific Institution "Institute of Nature Management of the National Academy of Sciences of Belarus" conducted tests that showed that there are significant balance reserves of sapropel in the lakes "Karasevo", "Bolshoe Svyatoye" and "Rubovskoye".

Lake sapropel is not only a valuable organic fertilizer and food additive for birds and livestock, but also a high-quality cosmetic and therapeutic mud.

On the land plot adjacent to the deposit, there is the possibility of placing a mud clinic, its own greenhouse or other related infrastructure.

The investment costs of the project amount to about 2 million rubles.

The average monthly sales volume will be about 1 thousand tons of organic sapropel.





### **13. Organization of production from secondary material resources**

Environmental protection is one of the most acute and urgent problems.

By intelligently using waste as secondary raw materials for processing and production of new goods with proper organization of their collection, we will save energy and natural resources, as well as preserve the environment around us.

The most common processing on one scale or another of materials such as glass, paper, aluminum, asphalt, iron, fabrics and various types of plastic. There is a corresponding processing technology for each type of raw materials.

Household garbage contains many valuable substances: organic compounds suitable for fertilizers, paper and cardboard, glass, plastic, leather, wood, metals. Therefore, projects are being developed and special waste recycling plants are being built.

This investment project involves the organization of production from secondary material resources at the discretion of the investor.

Depending on the type and scale of production, a land plot will be selected.

Investment costs are determined by the investor himself.





## 14. Organization of production for freezing vegetables and fruits

Food production is always relevant and consistently brings profit. In the climatic conditions of our country, when there is a regular need for vitamins, it is advantageous to organize the production of frozen vegetables, fruits and berries.

Consumer demand for frozen vegetable and fruit mixes is growing every day. Frozen vegetables and fruits are just as useful as fresh ones, they can be used for cooking, decorating desserts, besides, these mixtures are stored for a long time.

The essence of the production of such mixtures is shock freezing with the help of special equipment, which allows them to preserve their properties (taste, presence of vitamins, natural freshness) for an almost unlimited amount of time. It is for the purchase of equipment that the bulk of the financial resources will be required.

Deep freezing technology is performed in several steps:  
cleaning of raw materials - acceptance of vegetables and fruits;  
sorting;  
slicing;  
mixing;  
shock cooling of vegetables;  
packaging and shipping of finished products to consumers.

The estimated investment volume is 250 thousand rubles.

There are unused real estate objects for the organization of production.



## 15. Construction of an off-road highway

Everyone decides the question of free time in their own way: someone does not think of his life without fishing, someone spends all weekend on the paintball fields, and someone, riding his powerful iron horse, goes to a place where it is not always possible to pass. And motorists believe that it is off-road that helps to recover from stress, to feel unity with nature.

Off-road is one of the most extreme technical sports and outdoor activities, which involves overcoming various kinds of obstacles off-road on an SUV or even a motorcycle.

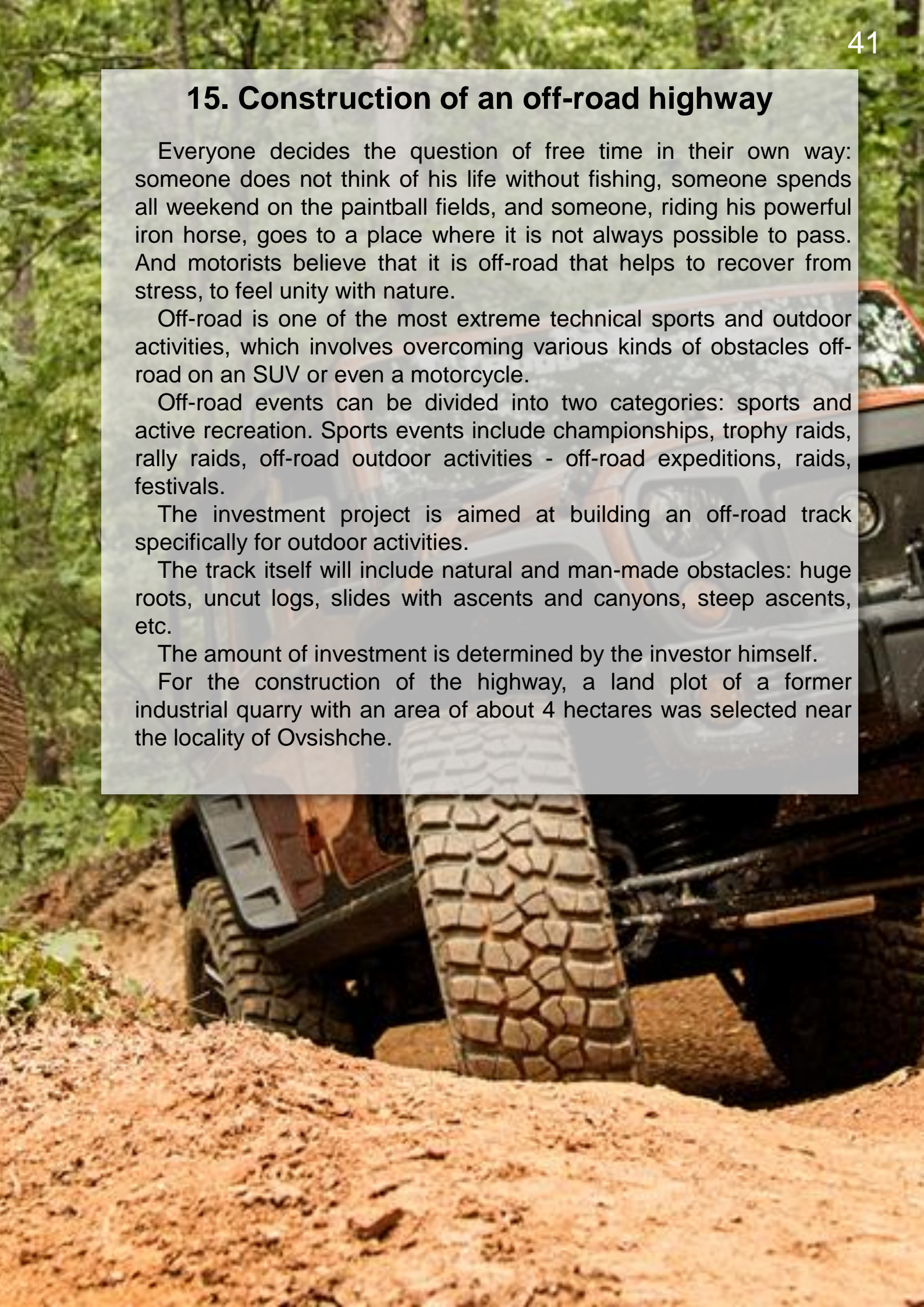
Off-road events can be divided into two categories: sports and active recreation. Sports events include championships, trophy raids, rally raids, off-road outdoor activities - off-road expeditions, raids, festivals.

The investment project is aimed at building an off-road track specifically for outdoor activities.

The track itself will include natural and man-made obstacles: huge roots, uncut logs, slides with ascents and canyons, steep ascents, etc.

The amount of investment is determined by the investor himself.

For the construction of the highway, a land plot of a former industrial quarry with an area of about 4 hectares was selected near the locality of Ovsishche.





## 16. Manufacture of metal structures for the construction of buildings and structures

The purpose of the project is the production of metal structures for prefabricated buildings made of sandwich panels, as well as the manufacture of metal stairs, stair and balcony fences, canopies, canopies, gates, fences, billboards, gardening products, bus shelters, warehouse and agricultural equipment, etc.

At the request of the customer, it is possible to produce standard and non-standard products, as well as metal structures of various complexity, shapes and sizes, including construction, spatial, installation, technological metal structures, building structures, prefabricated structures, structures. Prompt and high-quality execution of individual orders with installation.

Completion of construction with metal structures, reinforcing grids and embedded elements.

Such a business idea as the production of metal structures is not the easiest thing, but it is very popular and profitable.

For the organization of production there is a building of the former workshop of JSC Sennensky rayagroservice with a total area of about 1625 square meters. meters, with the presence of water and electricity supply.



The main part of the investment costs will be for the purchase of equipment, at least 250 thousand rubles.

The project provides for the creation of at least 10 new jobs.

The main advantage of this type of production is the demand. Constructions made of metal have always been and will be popular. There will always be a customer for each of the products.



## 17. Production of wood products

Wood is a raw material that is often used to make various items for a comfortable life. All because wood is a high-quality, versatile and environmentally friendly material. To open a small business, you will not need large initial investments or rental of premises. It will only require knowledge of working with such material.

Wood is used mainly in large furniture productions, as well as in most small household businesses. This happens because of the existing advantages that the business has on the tree:

Handmade products are relevant and do not lose demand – they feel the emotions of the author, the vitality.

The material is very reliable, environmentally friendly, so it is suitable for many products.

Knowledge of woodwork is obtained quickly enough – you just need to practice.

The material is quite common, it is easy to buy.

Wooden products attract customers, arouse their interest.

There is no need to equip a special room – even a garage or a basement in the house will do.

There is also an opportunity to organize a business on the areas of the former sawmill of the housing and communal services in the locality of Bogdanovo.

There are many business ideas for small businesses: making games for children, creating finishing materials (stairs, flooring, doors), creating interior items (shelves, baskets, hangers), furniture.

On average, it will take about 5 thousand rubles to open a small business. At the initial stage, a subsidy to the unemployed may become financial support.



## 18. Preparation of medicinal herbs

Since ancient times, people have been treated with herbs. Medicinal plants were collected in autumn and summer, and used year-round. Even now, despite the abundance of medicines, phytotherapy does not lose its relevance and remains a popular method of treatment and health maintenance.

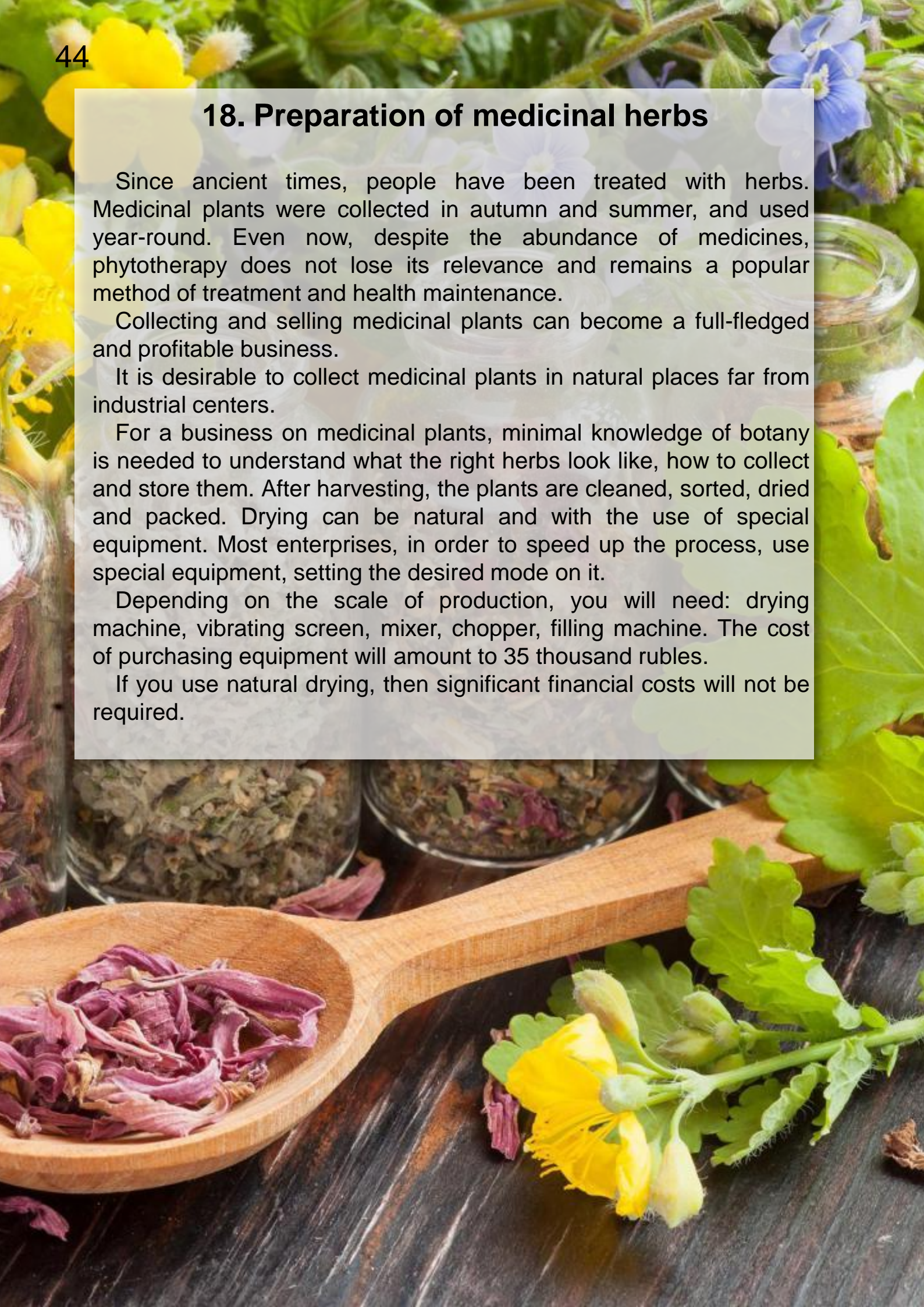
Collecting and selling medicinal plants can become a full-fledged and profitable business.

It is desirable to collect medicinal plants in natural places far from industrial centers.

For a business on medicinal plants, minimal knowledge of botany is needed to understand what the right herbs look like, how to collect and store them. After harvesting, the plants are cleaned, sorted, dried and packed. Drying can be natural and with the use of special equipment. Most enterprises, in order to speed up the process, use special equipment, setting the desired mode on it.

Depending on the scale of production, you will need: drying machine, vibrating screen, mixer, chopper, filling machine. The cost of purchasing equipment will amount to 35 thousand rubles.

If you use natural drying, then significant financial costs will not be required.





## 19. Creation of secondary crushed stone production

There are 287 unused real estate objects of all forms of ownership on the territory of Sennensky district.

In order to promptly resolve issues related to the demolition of facilities, an investment project has been developed, which involves the creation of an enterprise to provide services for:



- demolition of unused real estate;
- recycling of construction waste;
- acceptance for processing of more than 45 types of waste, including fragments of structures, the battle of bricks, concrete, molding mixtures, asphalt concrete from the disassembly of road surfaces with the possibility of further separation of fractions.

The company will also be able to independently demolish buildings, dismantle building structures and engineering systems for a full cycle of work - from project development to the disposal of construction waste.

The work uses a mobile complex of equipment based on a mobile tracked jaw crusher and a mobile tracked screen.

The result of the processing of construction waste is a mixture of crushed stone of two types "Crushed stone" and "Secondary crushed stone as a filler in concrete".

The processing capacity ranges from 10 to 20 cubic meters/hour.

The volume of investments is 1.1 million rubles.



## **1. The building of the former GUO "Alexinich secondary school of Sennensky district"**

Location: Vitebsk region, Sennensky district, n.p. Alexinichi, Shkolnaya str., 13.

Offer for use: gratuitous transfer for the implementation of an investment project, leasing or sale.

Description of the object: a two-story brick school building built in 1998 with a total area of 1935.8 sq.m. with a basement, a vegetable storage, a warehouse building, two toilets, a block shed, a shed for firewood, a metal fence. The land plot is 1.9894 hectares, encumbrances are a security zone of a power transmission line with a voltage of over 1000 V with an area of 0.2155 hectares. The object is located 25 km away. from the city of Senno, 70 km away. from the city of Vitebsk.

Communications: there are power lines, water supply, sewerage, boiler house on local fuels.

Balance holder: Education Department of the Sennensky District Executive Committee.

Address: 21117, Vitebsk region, Senno, K.Marx str., 2  
tel: +375 2135 5 52 61, email: [senno.roo@yandex.by](mailto:senno.roo@yandex.by)







## **2. The building of the former GUO "Moshenskaya kindergarten - secondary school of Sennensky district"**

Location: Vitebsk region, Sennensky district, n.p. Mosheny, d. 2.

Offer for use: gratuitous transfer for the implementation of an investment project, leasing or sale.

Description of the object: a building built in 1965, with a total area of 1988.4 sq.m with an extension, a vegetable storage, 2 sheds, 6 sheds. The foundation is reinforced concrete blocks, the ceiling is reinforced concrete, the roof is combined rolled. A plot of land with an area of 4,0068 hectares, 11 km from Senno, on the P25 highway, 44 km from Vitebsk. Encumbrances – location in the water-protected zone of a water body outside the coastal strip (Berezka River).

Communications: there are power lines, sewer network, water supply, boiler house on local fuels.

Balance holder: Education Department of the Sennensky District Executive Committee.

Address: 21117, Vitebsk region, Senno, K.Marx str., 2

tel: +375 2135 5 52 61, email: senno.roo@yandex.by







### **3. The building of the former GUO "Bogdanovsky kindergarten of Sennensky district"**

Location: Vitebsk region, Sennensky district, Bogdanovo ag., Urozhnaya str., 10.

Offer for use: gratuitous transfer for the implementation of an investment project, leasing or sale.

Description of the object: a two-storey brick building built in 1984, the total area of 1026.0 sq.m., the land area is 0.6376 hectares. The object is located near the R-113 highway, 7 km from the city of Senno.

Communications: there are power lines, sewer network, water supply, heating network.

Balance holder: Education Department of the Sennensky District Executive Committee.

Address: 21117, Vitebsk region, Senno, K.Marx str., 2  
tel: +375 2135 5 52 61, email: senno.roo@yandex.by







#### **4. The complex of buildings of the former postal station in the locality of Pogrebenko**

Location: Vitebsk region, Sennensky district, n.p. Pogrebenko, 2, 2/1.

Offer for use: gratuitous transfer for the implementation of an investment project, leasing or sale.

Characteristics of the object: historical and cultural value, the construction complex of the late 1840s: the station house building is a brick plastered one-story, with a total area of 115.4 sq. m.m; ½ part of the wing building with an area of 37.15 sq.m. The total area of the land plot is 0.23 hectares. The objects are located within the settlement, the developed infrastructure of the area, the lack of difficulty with Parking.

Communications: furnace heating, natural ventilation, availability of power supply networks.

Balance holder: Department of Ideological work, Culture and Youth Affairs of the Sennensky District Executive Committee.

Address: 21117, Vitebsk region, Senno, K.Marx str., 2

tel: +375 2135 5 58 90, email: ideologia-@mail.ru







## 5. Manor and park complex in the locality of Flame

Location: Vitebsk region, Sennensky district, ag. Flame.

Offer for use: gratuitous transfer for the implementation of an investment project, leasing or sale.

Object characteristics: a complex of brick buildings of the late 19th - early 20th century buildings: a two-story building of the main building - built in 1890, a warehouse building - built in 1913, a manor house and a two-story dairy building built in 1913, a one-story grain warehouse building built in 1913, etc. The total land area is 9.6 hectares.

Communications: none.







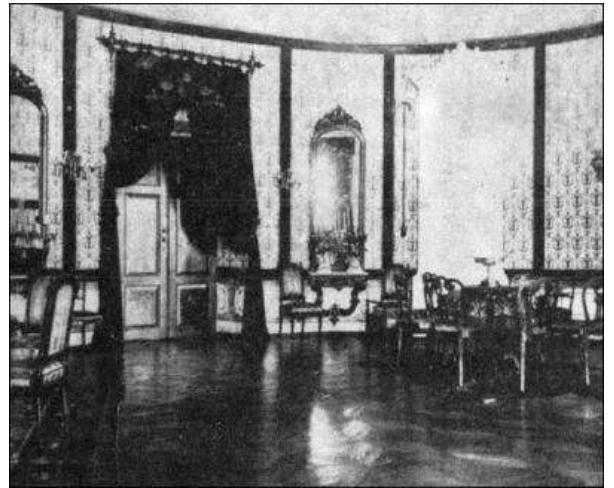
The object is recognized as a historical and cultural value of the Republic of Belarus.

At various times, the estate belonged to several famous Belarusian gentry families: Glebovich, Sapieha, Svyatsky.

The last owners of the estate in the late 19th – early 20th century were the Svyatsky landowners, under whom it became the center of local industry. Here they purified alcohol, ground flour, and tore up cereals.

In 1903-1904, Yanka Kupala, a national poet of Belarus, worked at the estate of Karl Svyatsky. At first Kupala worked as a clerk, then he got the position of a housekeeper. It was in Belitsa that the formation of the young poet took place, it is here that his poem "May Share" appears. In 1972, a memorial plaque was installed on the building where Kupala lived and worked.

On the basis of the Pansky estate in Soviet times, the state farm "Flame" was created, later renamed the "Flame" breeding plant. In the manor house



an agricultural college was opened in the building. During the Great Patriotic War, the house housed German barracks. In the post-war period, at various times there were: a school, a house of culture, a library.

In the mid-1980s, the estate began to collapse. In 1985, after developing a plan for its reconstruction, the roof was removed from the house, but the restoration did not go beyond that.

At the present stage, it is possible to restore and restore the palace only on the basis of the foundation. There is an opinion that if the monument has preserved the foundation, then the monument is still alive.

Address: 21117, Vitebsk region, Senno, K.Marx str., 2

tel.: +375 2135 5 95 86,

email: [ekonom@senno.vitebsk-region.gov.by](mailto:ekonom@senno.vitebsk-region.gov.by)





## 6. Repair and maintenance complex in the locality of Purplevo

Location: Vitebsk region, Sennensky district, n.p. Purplyovo.

Offer for use: gratuitous transfer for the implementation of an investment project, leasing or sale.

Garages with an area of 740 sq.m., boiler room 459 sq.m., workshop 1550 sq.m

Communications: electricity, water supply.

Balance holder: Housing and communal services.

Address: 149 Oktyabrskaya str., Sennensky district, Vitebsk region, 21117.

tel: +375 2135 5 53 76,

email: info@sengkh.by







## **7. The building of the former GUO "Konstantovskaya kindergarten - primary school Sennensky district"**

Location: Vitebsk region, Sennensky district, Moshkansky village, n.p. Konstantovo, Tsentralnaya str., 36.

Offer for use: gratuitous transfer for the implementation of an investment project, leasing or sale.

Object characteristics: a complex of capital buildings, a one-story brick school building built in 1964, with a total area of 671.0 sq.m. On the territory of the school there are: a gymnasium of 1987 commissioning with a total area of 540 sq.m, a boiler room of 2008 with a total area of 27.6 sq. m, a classroom building of 1987 with a total area of 129 sq. m, a log utility building of 1986 with a total area of 82 sq. m, a toilet of 1948 with a total area of 5 sq.m. There is an orchard. The total land area is 1,0308 hectares.

Communications: furnace heating, cast-iron radiators, natural ventilation.

Balance holder: Education Department of the Sennensky District Executive Committee.

Address: 21117, Vitebsk region, Senno, K.Marx str., 2  
tel: +375 2135 5 52 61, email: senno.roo@yandex.by







## 8. The building of the former control room of JSC Sennensky Rayagroservice

Location: Vitebsk region, Senno, Oktyabrskaya str., 166A, bldg.2.

Offer for use: gratuitous transfer for the implementation of an investment project, leasing or sale.

Object characteristics: brick building in satisfactory condition, total area of about 225 sq. m

Communications: electricity, water supply, boiler room per MW.

Address: 21117, Vitebsk region, Senno, K.Marx str., 2

tel: +375 2135 5 95 86,

email: [ekonom@senno.vitebsk-region.gov.by](mailto:ekonom@senno.vitebsk-region.gov.by)





# THE LIST OF LAND PLOTS INTENDED FOR<sup>55</sup> SUBSEQUENT PROVISION TO INVESTORS FOR THE IMPLEMENTATION OF INVESTMENT PROJECTS

**1. For the construction of the object** "Construction and maintenance of a gas station (gas station), retail and catering facilities at the intersection of highways M-8/E-95 border of the Russian Federation (Yezerishche)- Vitebsk-Gomel - border of Ukraine (New Huta) and R-86 Bogushevsk-Senno-Lepel.

The land area is 1,0002 hectares.

There are no restrictions (encumbrances) in the use of the land plot.

It is necessary to arrange entry and exit, 65 m from the 110 kV transmission line section, 18 m from the section passes the M 8/E95 Border of the Russian Federation (Yezerishche) - Vitebsk-Gomel-the border of Ukraine (New Huta).

The cadastral value of the plot for 1 m<sup>2</sup> is 0.19 USD.

**2. the city of Senno, near Zavodskaya Street, the land of the former JSC "Sennensky flax plant".**

Possible intended use of the land plot: for the placement of a production facility.

The approximate area of the land plot is 20 hectares.

Availability of restrictions (encumbrances) of rights to a land plot: A power line with a voltage of up to 1000 V.

Connection points within a radius of 300 m, paved street.

The cadastral value of the plot for 1 m<sup>2</sup> is 5.06 USD.



### **3. n.p. Tsypki, Bogushevsky village, the territory of the former JSC "Bogushevsky flax plant"**

Possible intended use of the land plot: for the placement of a production facility.

The approximate area of the land plot is 17 hectares.

Availability of restrictions (encumbrances) of rights to a land plot: A power line with a voltage of up to 1000 V.

Railway line - 2.7 km (Bogushevskaya station), electricity, gas supply, water supply, sewerage.

The cadastral value of the plot for 1 m<sup>2</sup> is 0.46 USD.

### **4. n. p. Svobodnoye, Bogdanovsky village.**

Possible intended use of the land plot: for the construction of a sanatorium and wellness complex.

The approximate area of the land plot is 5 hectares.

The presence of restrictions (encumbrances) of rights to land: Coastal and water protection zone.

Highway R-25 Vitebsk-Senno-Tolochin (0.5 km).

The cadastral value of the plot for 1 m<sup>2</sup> is 0.1 USD.

### **5. Belitsky village Council, near the locality of Menyutevo.**

Possible intended use of the land plot: for the construction of a dairy farm.

The approximate area of the land plot is 80 hectares.

The presence of restrictions (encumbrances) of rights to land: no.

There are no engineering networks and social infrastructure, there is an asphalt road nearby.

The cadastral value of the plot for 1 m<sup>2</sup> is 0.17 USD.



# THE LIST OF COMMODITY ITEMS MOST IMPORTED TO THE VITEBSK REGION FOR THE POSSIBLE DEVELOPMENT OF THEIR PRODUCTION BY SMALL AND MEDIUM-SIZED BUSINESSES

HS Code	Position name
2522	Slaked lime, except calcium oxide and hydroxide
2936	Vitamins and their derivatives
3204	Dyes and preparations made on their basis
3208	Other solutions of paints and varnishes made on the basis of synthetic polymers
3901	Polyethylene
3902	Polypropylene
3903	Polystyrene
3904	Polyvinyl Chloride
3907	Polycarbonates other
3916	Monofilament with a cross-sectional size of more than 1 mm, bars, rods and shaped profiles, with a treated or untreated surface, but not otherwise treated, made of vinyl chloride polymers
3917	Pipes, tubes and hoses, rigid, made of ethylene polymers, seamless, cut into segments whose length exceeds max. the size of the cross-section with processing. or untreated surface
3920	Plates, sheets, film and strips or tapes, other, of plastics
3921	Plates, sheets, film and strips or tapes made of plastics, other
3923	Products for transportation and packaging of goods, made of plastics
4412	Glued plywood, veneered panels and similar materials
4415	Boxes, boxes, packing crates or baskets, drums
4819	Cartons, boxes, boxes, bags, bags and other packaging containers



HS Code	Position name
7208	Flat rolled products made of iron or non-alloy steel
7209	
7210	
7211	
7216	
7217	
7304	Pipes, tubes and profiles, hollow, seamless, of ferrous metals
7306	Other hollow pipes, tubes and profiles
7308	Metal structures made of ferrous metals
7408	Copper wire
7605	Aluminum wire
8302	Fasteners, fittings and similar products
8309	Plugs, caps and caps (including crown caps)
8421	Equipment and devices for filtering or purifying water: other
8481	Cranes, valves, valves and similar fittings for pipelines
8544	Insulated wires
9001	Optical fibers and fiber-optic bundles; cables
9109	Watch mechanisms for watches not intended to be worn
9405	Lamps and lighting equipment, including floodlights
9607	Zippers and their parts